

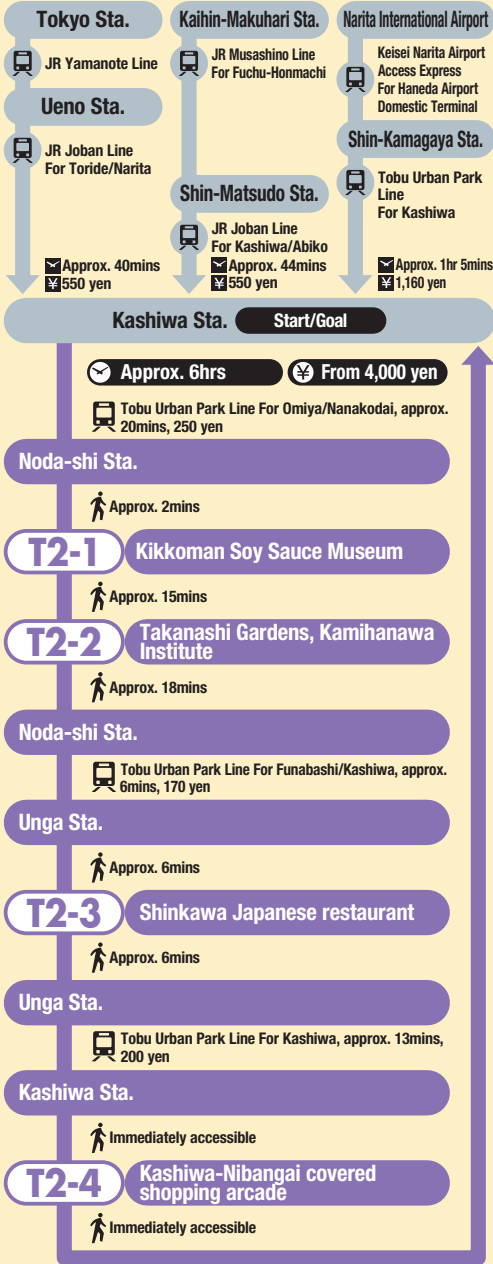
T2 Learn about Japanese food culture through plant tours and washoku ROUTE

Visit spots to learn about the depth of Japanese food culture in Noda, which has been long known as a manufacturing area for soy sauce.

Best season



(ROUTE)



Sightsee in Noda with its thriving soy sauce industry using Tobu Railway originating in Kashiwa at the heart of the Hokuso area. At the end of the course return to Kashiwa and enjoy shopping. The area around the station is bustling, and also has department stores of long-standing.



T2-1 Kikkoman Soy Sauce Museum

A museum of a leading manufacturer of soy sauce in Japan. Learn more about the soy sauce making process. Tastings possible.

〒110 Noda, Noda (In the Noda plant of Kikkoman Corporation) ☎04-7123-5136 🕒9:00-16:00 (Final admission 15:30) 🗓Every 4th Mon. 🆓Free 🚗Available



T2-1 Kikkoman Soy Sauce Museum



The estate of an influential soy sauce manufacturer of the Edo period. The gardens were registered as a national natural beauty spot in 2001.

〒507 Kamihanawa, Noda ☎04-7122-2070 🕒10:00-17:00 (March/Oct.-Dec. till 16:00. Admission till one hour bef. closing) 🗓Mon./Tue. (changes in case of public holidays) 🗿Tour courses from 500 yen 🆓Available

T2-2 Takanashi Gardens/Kamihanawa Institute

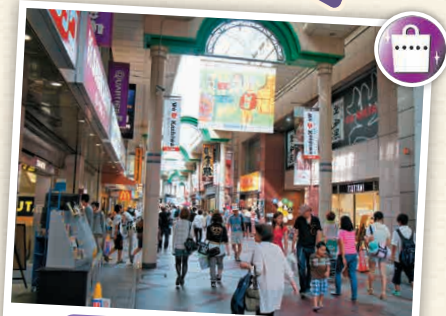
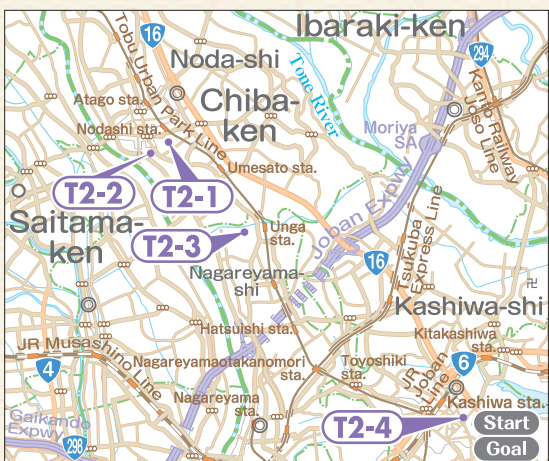


T2-3 Shinkawa Japanese restaurant

T2-3 Shinkawa Japanese restaurant

Traditional Japanese restaurant established in 1892. You can enjoy authentic washoku Japanese cuisine using high quality ingredients such as eel and wagyu beef.

〒805 Niishi-Fukai, Nagareyama ☎04-7152-1008 🕒11:30-16:00, 17:00-22:00 🗓Mon. (open if public holiday) 🆓Available



T2-4 Kashiwa-Nibangai covered shopping arcade

One of the most bustling shopping arcades in the prefecture. The arcade is covered, meaning you can enjoy shopping whatever the weather.

〒1 Kashiwa, Kashiwa ☎04-7167-3131 🗿Depends on shop 🆓Available